

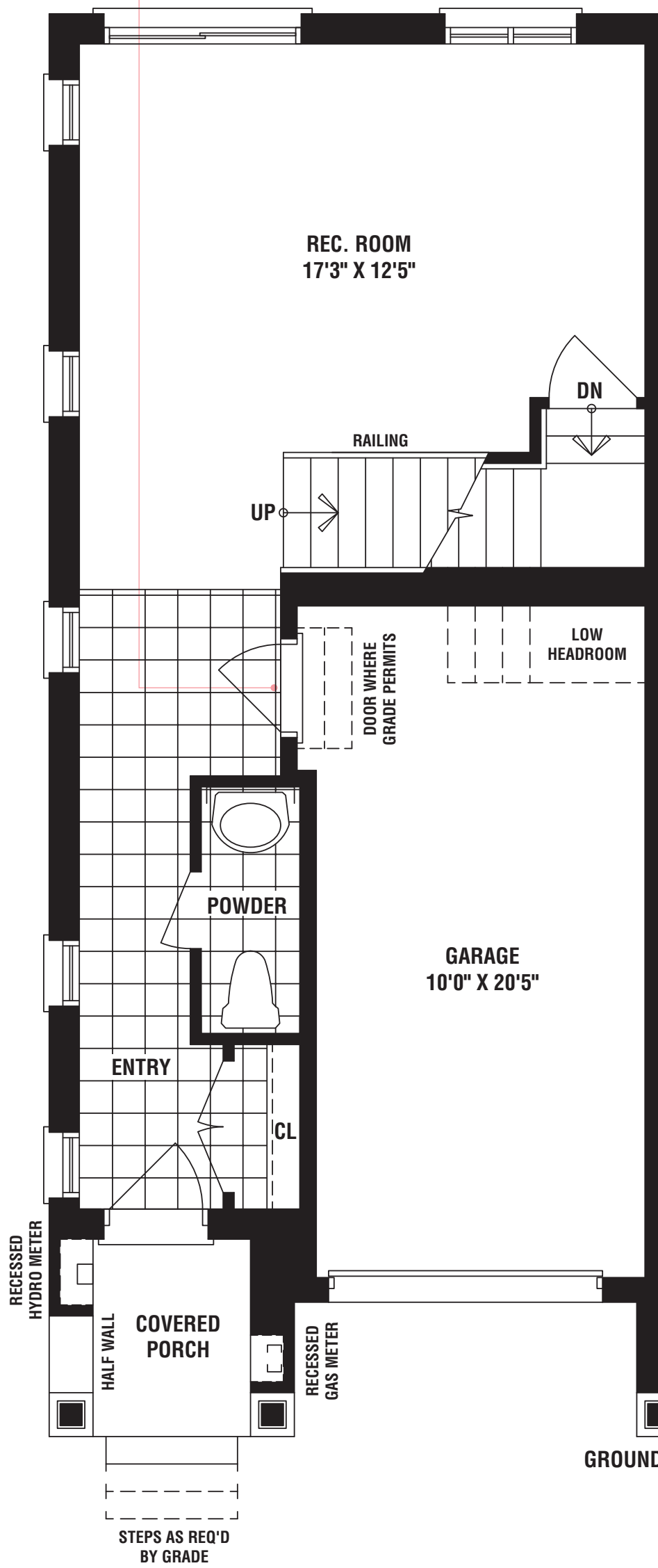
WILSHIRE

2035 SQ FT
2323 SQ FT WITH OPTIONAL FINISHED BASEMENT

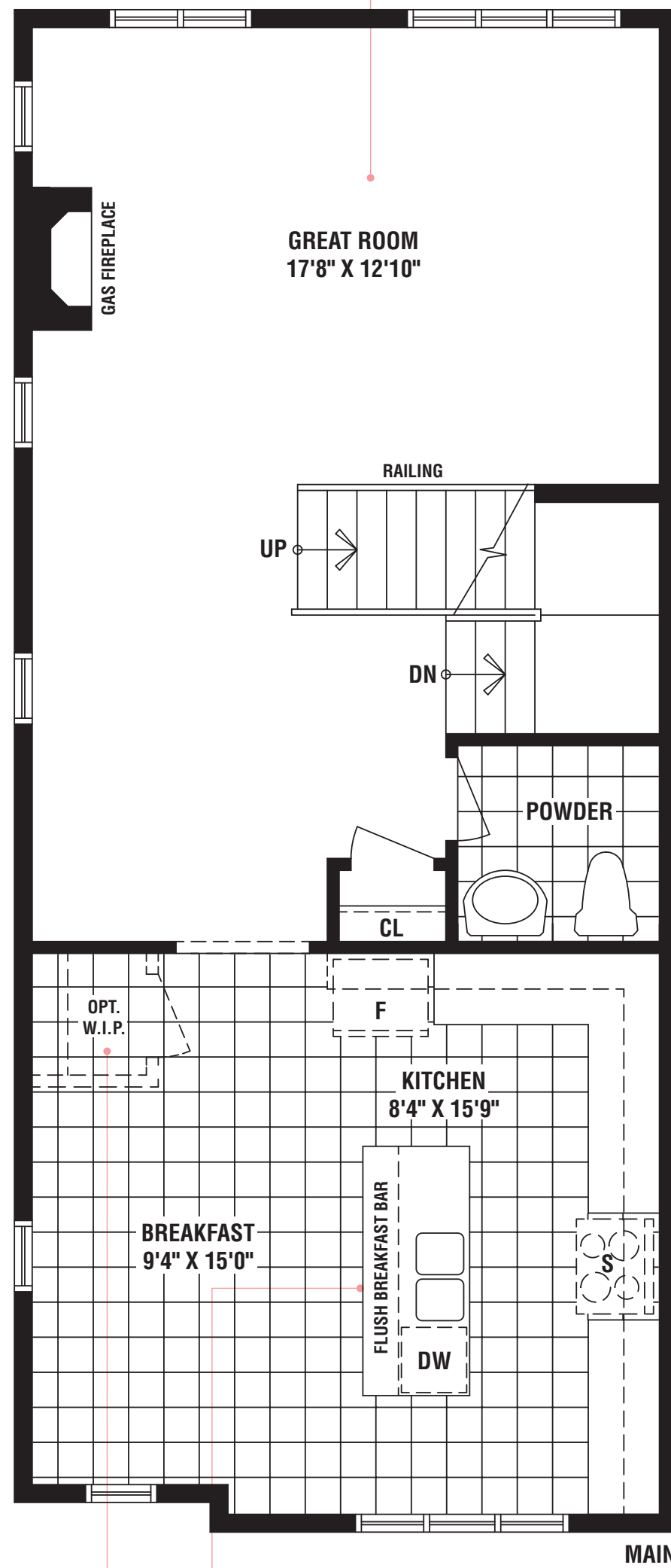


On the main level, an expansive great room features a charming gas fireplace, and large picture windows, creating a wonderful space for your family to relax and enjoy some quality time together

Direct garage access to the house is perfect for all those cold and rainy days



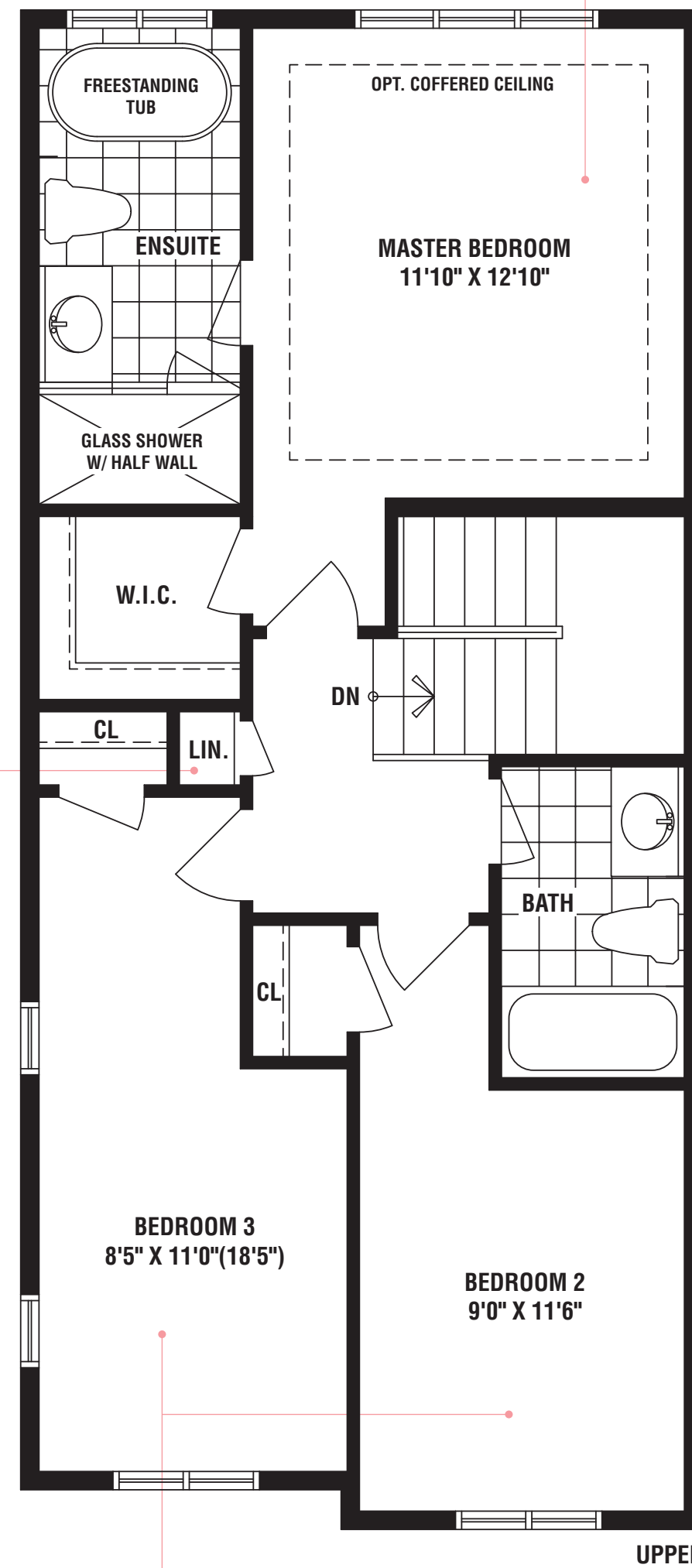
You'll have more than enough space to store all your kitchen essentials with this enormous optional walk-in pantry



The flush breakfast bar is the perfect place to enjoy the most important meal of the day

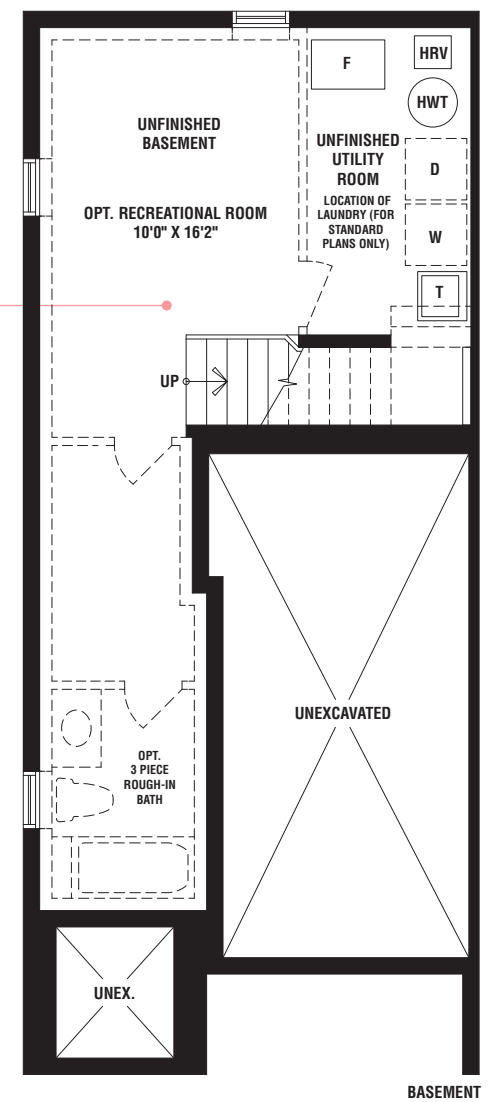
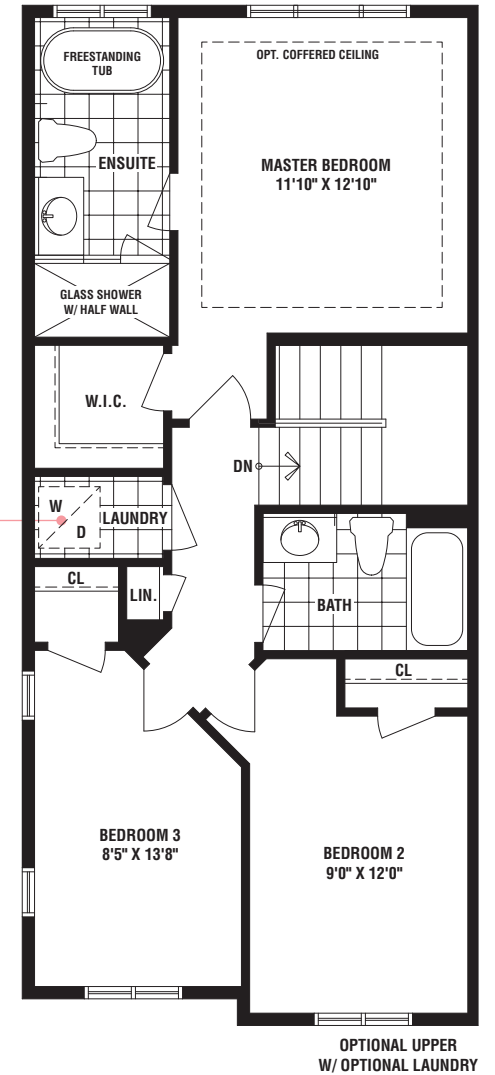
A well-placed linen closet gives you ample storage for all your bed and bath essentials

Homebuyers in search of a lavish retreat will love this beautiful master suite, which boasts an ensuite bathroom that includes a freestanding tub and glass shower



There's plenty of space for the whole family with the spacious 2nd and 3rd bedrooms

The optional upper level laundry room makes doing the family wash a whole lot easier



An additional optional rec room in the basement lets you get the most out of your homes interior space