

COLUMBUS

1954 SQ FT
2236 SQ FT WITH OPTIONAL FINISHED BASEMENT



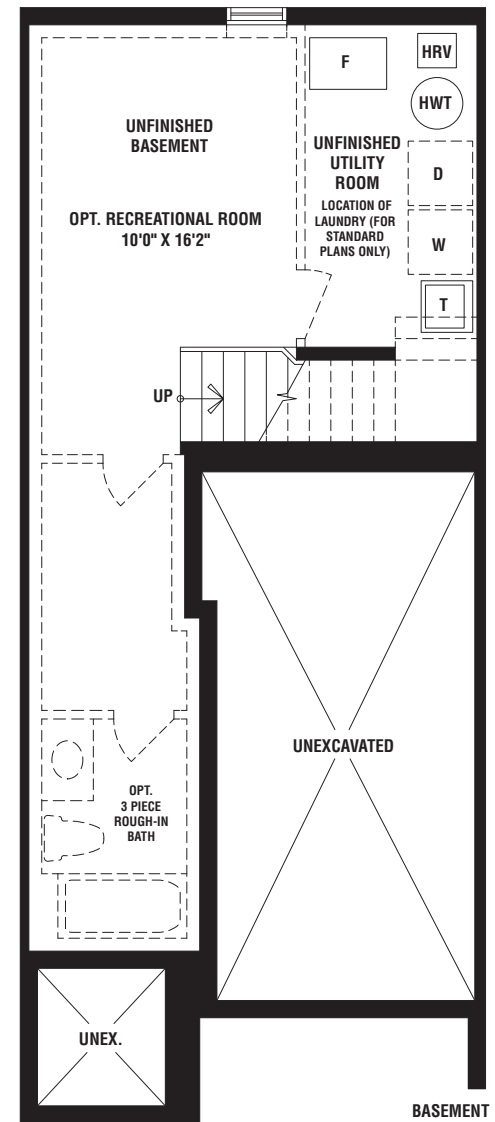
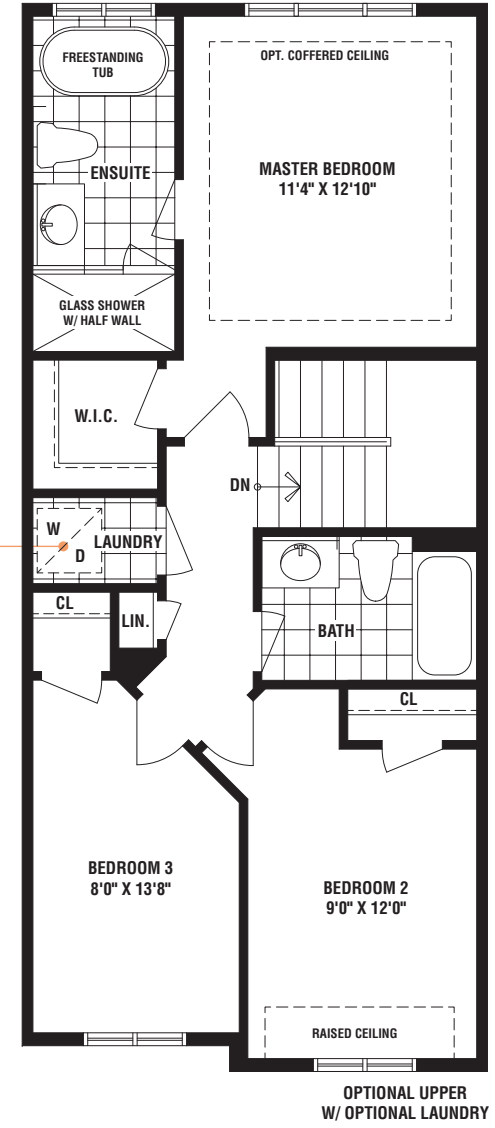
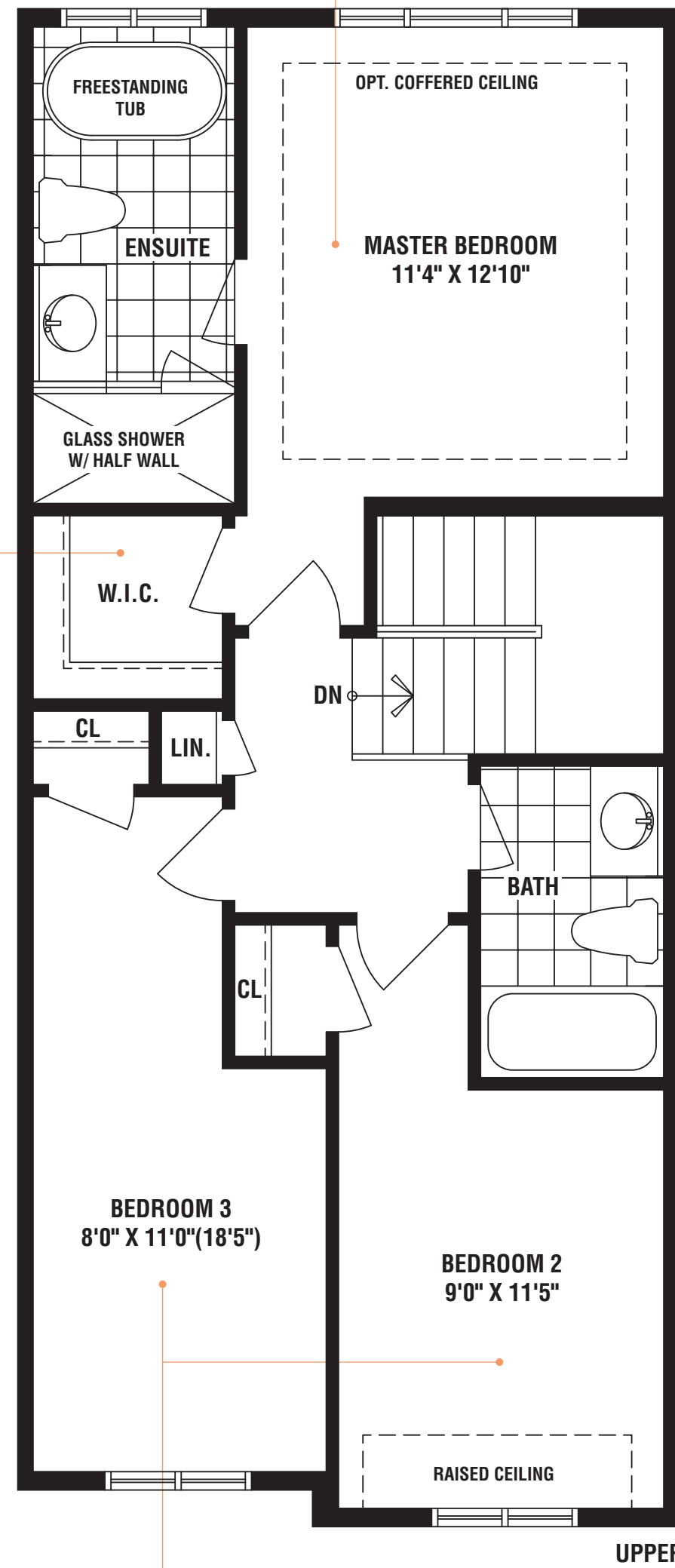
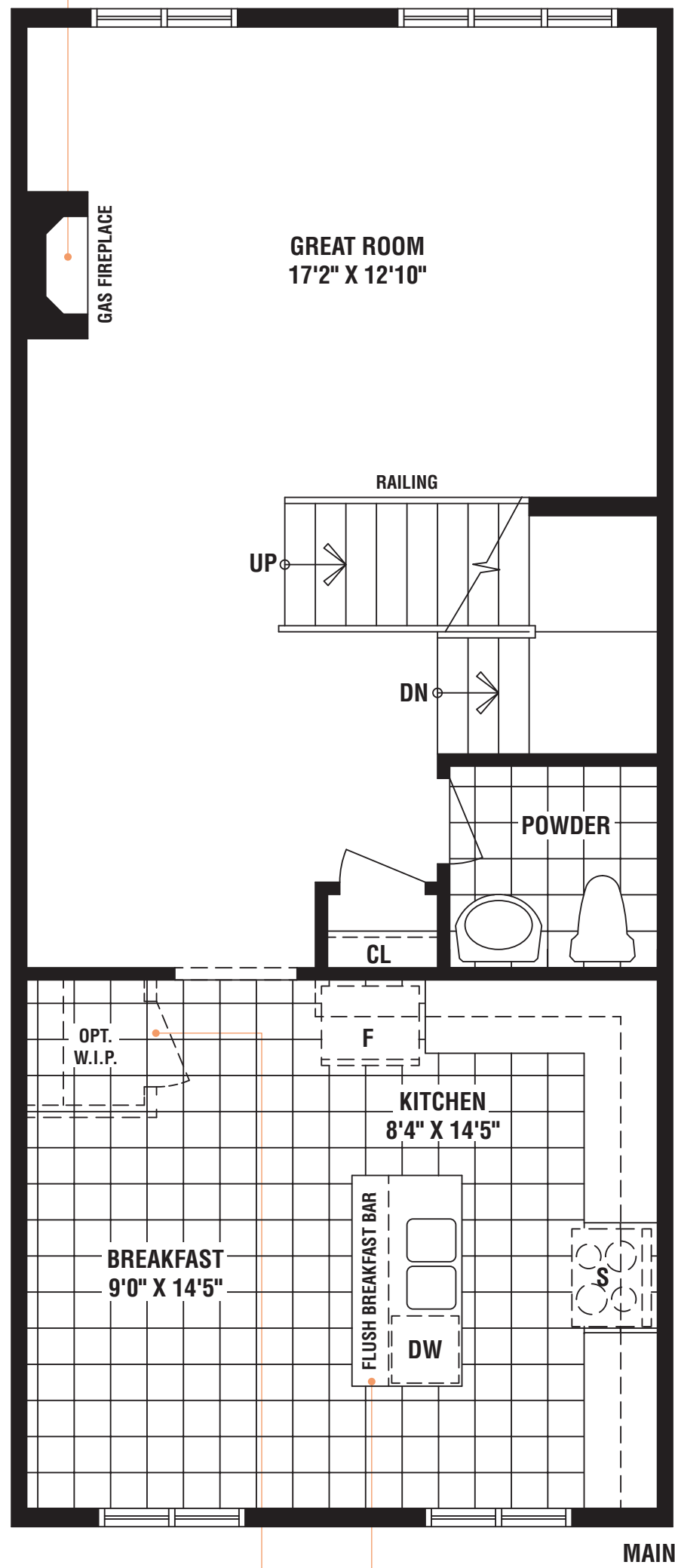
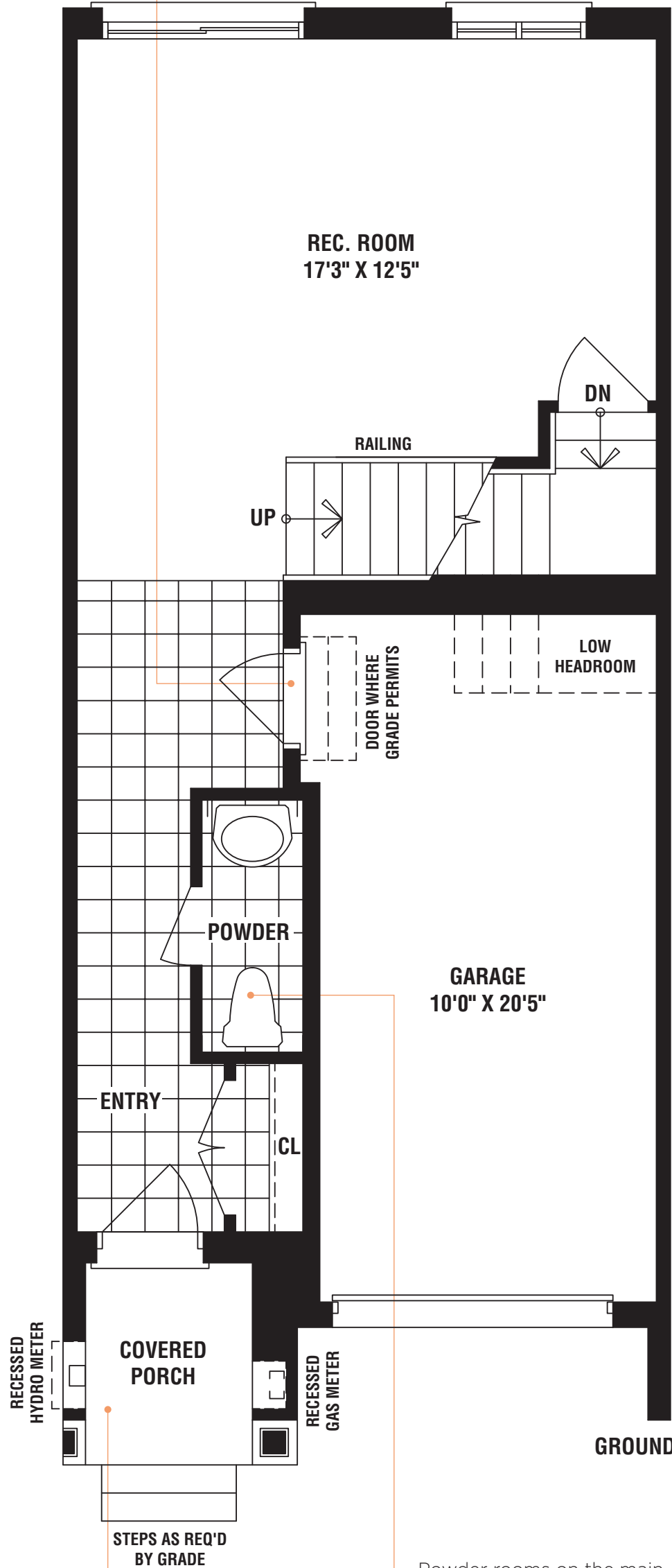
Direct garage access to the house is perfect for all those cold and rainy days

With a cozy gas fireplace to snuggle up beside in the great room, you might just choose to stay in for the night a little more often

Homebuyers in search of a lavish retreat will love this beautiful master suite, which boasts an ensuite bathroom that includes a freestanding tub and glass shower

A generously proportioned walk-in closet is essential for any master suite

The optional upper level laundry room makes doing the family wash a whole lot easier



A charming covered porch creates an inviting atmosphere from the very moment you step into your home

An optional walk-in pantry gives your family plenty of extra kitchen storage space

The flush breakfast bar is the perfect place to enjoy the most important meal of the day

There's plenty of space for the whole family with the spacious 2nd and 3rd bedrooms

Powder rooms on the main and lower level mean you'll never have to wait in line